

THE LIGHTHOUSE

SAFE PASSAGE IN A TURBULENT SEA



NEW WORK BY WILLIAM TERSTEEG

Foreword

In September of 2018 I traveled to New York City with the Art Museum of South Texas. It had been 4 long years since I had been in the East Coast, where I spent 13 blissful years. To live and work in that part of the United States was a childhood dream fulfilled.

While in the Big Apple I decided to extend my visit and traveled to Scranton, Pennsylvania where my art collection remained in storage since 2014, the year I moved back to Texas. The goal was simple, to ship the artwork to Rockport, visit with old friends and act like a tourist in the City where I used to dwell.

I met William Tersteeg 20 years ago due to my affiliation with AFA Gallery. AFA stands for artists for art, a volunteer run art space that inhabited a beautiful historic building in downtown Scranton. Tersteeg, who I call Bill, and I served on the board of directors. Every month we would also hang new art shows and spend time socializing afterwards. Friendship and mutual respect grew over the course of my time in the Commonwealth of Pennsylvania.

During my stay in Scranton, I visited Bill and his wife DeDe. As always he took me to his studio to show me what he was working on. I was always astounded by his unique style and the depth of his craftsmanship in manipulating clay and turning it into *objets d'art*. Here is a man, I thought, that is still learning and growing and pushing his art form to new heights.

As I walked around the gallery portion of his studio, I discovered two ceramic lighthouses. I immediately went to them. I have been fascinated with lighthouses since childhood. In my 30s I traveled extensively around the Spanish coast of the Mediterranean Sea where I got to see some of the most beautiful *faros* in the world. There is something romantic about a lighthouse and something mysterious too.

Bill allowed me to hold one of the lighthouses and showed me the details he had incised and painted unto the clay. He likes to use the Japanese inspired raku process for firing. Like classical paintings hanging in European museums, the lighthouse took life in my hands. For 40 years Tersteeg has honed his craft. The result is a masterful and harmonious manipulation of clay, glaze and fire that create the most exuberant and colorful vessels.

It was in his studio that the premise for a show of his work was born. More than three years have passed since that meeting, and 21 beautiful ceramic vessels, inspired primarily by the lighthouses of the State of Texas, are in Rockport during Tersteeg's residency. Bill is the 10th artist in residence, a project we started in 2012, but he is the first ceramicist.

This is a rare and unique opportunity to acquire work for your collection by a master ceramicist who has reached the professional zenith of his career. Tersteeg enjoys a national reputation. His work has been in exhibits in important museums and institutions across the United States and it forms part of important public and corporate collections.

Luis Purón
Executive Director
Rockport Center for the Arts

Artist Statement

“THE LIGHTHOUSE” - SAFE PASSAGE IN A TURBULENT SEA

In my current body of work, I explore the lighthouse as a symbol of stability and a beacon of safe passage in our world’s turbulent times.

For as long as I’ve worked as a ceramic sculptor, I have seen myself as a visual poet. Like all artists, I create from what I am. This work presents the lighthouse as a symbol of hope, a beacon of safety on the edge of the troubled sea. Lighthouses are constructed to withstand powerful, violent storms and turbulent ocean waters, so it is no wonder they are frequently depicted as symbols of strength. They are also reflections of my visual, intellectual and emotional world. I am the poet, musician, dancer and author on a creative path that leads me through a visual journey. Along the way I’m able to include content that reflects the landscapes of coastal environments and records the history of our coasts.

Intellectually, my work deals with the functioning of a form as we experience it and maps the geometry of three-dimensional space. I am intrigued by the way a line moves on a curved surface revealing both the etched surface and the depicted space. I marvel at how light reflects the glazed surfaces, engaging textures and colors, changing with shifting light conditions.

Emotionally, I struggle within my reality and my life’s memories and reflections. Through my work, made of the earth, I contemplate the relationships we have with our world and the challenges of our stewardship.

My art and my life exist hopeful that knowledge and truth will create what is right for our future.

William Tersteeg
Ceramic Sculptor

Curator's Statement

When the Art Center asked William Tersteeg to create this exhibition, he had never been to Rockport. But he had heard a lot about the city and its art community enduring and rebounding after the devastation of Hurricane Harvey. This resiliency was the inspiration for the show, and Tersteeg uses the symbol of the lighthouse to represent the fortitude found in Rockport.

Tersteeg emphasizes that his work functions from both far away and up close. The form of each vessel is carefully considered to have a striking silhouette. The vessels' surfaces are full of fantastic detail and imagery. Daytime and nighttime are frequent themes in his work, with the moons framed by celestial halos and stars recalling the nautical theme of the artwork. Faint shapes of turtles and insects are fun surprises when discovered, and the bottoms of the vessels are decorated with stylized fauna. The vessels never have a dull moment, and even the large areas of color shimmer with the metallic undulations of the raku firing.

Each artwork has its own story that is told through vignettes on the form. "Storm on Sabine Bank" depicts the moments before and during Hurricane Ida, the most recent hurricane to impact the Texas coast. On one side, we see the turtles migrating to the sea before the storm, and on the other side we see the Sabine Pass Light through stylized rain. In "Shrimping Half Moon" we see the Lydia Ann Lighthouse on a peaceful night, and on the other side we see a shrimp boat heading to shore in the early morning. The vessels capture the spirit of the coast through these precious narratives.

You will never see another show like this nor encounter another artist like William Tersteeg. His craftsmanship is unparalleled, and the artwork is as iconic as the city that inspired it.

Elena Rodriguez
Curator of Exhibitions
Rockport Center for the Arts

How to Acquire Art from the Catalog

To purchase work in the catalog please call Rockport Center for the Arts at (361) 729-5519, or stop by the Gallery during normal business hours. The Gallery is located at 401 S. Austin St. in Rockport, Texas. Payment method options include cash, checks and major credit cards. *Gallery Hours are Tuesdays-Thursdays 10 am - 4 pm, Fridays-Saturdays 10 am - 5 pm, Sundays Noon - 4 pm.*

Dimensions of works of art are shown as height by width.

Prices listed are before taxes. During check-out, taxes will be added at the local tax rate of 8.25%.

To view the work in person please call 361-729-5519 or email kim@rockportartcenter.com to make arrangements.

To have work shipped please make arrangements with the art handler of your choice. Shipping expenses are the responsibility of the buyer. Below are three companies we are familiar with who should be able to manage your art shipping needs. We strongly encourage you to insure your purchase.

- Ship & Crate, Attn: Chad Miller, 361-461-2416, chad@shipandcrate.com
- Postal Annex, Attn: Gayle Thomas, 361-992-9323, pa12004@postalannex.com
- UPS Store #6986, Attn: Zamir, 361-356-1032, store6986@theupsstore.com

For additional information or questions please call Luis Purón at (361) 450-8022, (570) 702-4032 or email luis@rockportartcenter.com.

Copyright 2022, Rockport Center for the Arts





Top View

Item #1

William Tersteeg

Port Aransas Night Light

Raku Clay- 1 vessel, 2 sections, top removable

H 12" x W 7"

\$1,600

(Inspired by Lydia Ann Lighthouse)



Item #2

William Tersteeg

Storm on Sabine Bank

Raku Clay- 1 vessel, 2 sections, top removable

17" x 8.5"

\$1,800

(Inspired by Sabine Bank Lighthouse)



Item #3

William Tersteeg

Lunar Effects

Raku Clay- 1 vessel. 2 sections, top removable

11.5" x 8"

\$1,300

(Inspired by Harbor Lighthouse in Hilton Head, South Carolina)

SOLD



Item #4

William Tersteeg

Southern Light

Raku Clay- 1 vessel, 2 sections, top removable

10.5" x 7.5"

\$1,700

(Inspired by Point Isabel Lighthouse)



Item #6

William Tersteeg

Lighthouse and Breakers

Raku Clay- 1 vessel, 2 sections, top removable

11" x 10.5"

\$1,500

(Inspired by Point Isabel Lighthouse)



Item #7

William Tersteeg

Light Houses with "Homers" Sea

Raku Clay- 1 vessel, 2 sections, top removable

25.5" x 10"

\$6,000

(Inspired by a lighthouse in the state of Maine and the paintings of
Winslow Homer)



Item #8

William Tersteeg

Night Light/ Day Light (Port Isabell)

Raku Clay- 1 vessel, 3 sections, top and cloud removable

22.5" x 15"

\$2,200

(Inspired by Point Isabel Lighthouse)

SOLD



Item #9

William Tersteeg

The Rush

Raku Clay etched glaze. 1 vessel.

12" x 13.5"

\$700

(Inspired by the birth of turtles on the Texas coast and the survival of seagulls)

SOLD



Bottom View



Item #10

William Tersteeg

Night Run

Raku Clay- 1 vessel, 2 sections, top removable

4.5" x 10"

\$1,600

(Inspired by Harbor Lighthouse in Hilton Head, South Carolina)

SOLD

The artist describes the bottom drawing as

"The view I see laying on my back and looking up at the stars through the trees."



Item #11

William Tersteeg

Sailing Into Half Moon Bay

Raku Clay- 1 Piece

13.5" x 10.5"

\$1,800

(Inspired by sailing)

SOLD



Item #12

William Tersteeg

Lighthouse I

Raku Clay- 1 vessel, 2 sections

8.5" x 9"

\$1,100

(Inspired by Harbor Lighthouse in Hilton Head, South Carolina)



Item #14

William Tersteeg

High Tide at Moors Head Bay

Raku Clay- 1 vessel, 2 sections, top removable

13.5" x 8"

\$3,500

(Inspired by Sankaty Head Lighthouse in Massachusetts)



Item #15

William Tersteeg

Shrimping/ Half Moon to Lydia Ann

Raku Clay- 1 vessel, 2 sections, top removable 13.5" x 8"

\$3,400

(Inspired by Lydia Ann Lighthouse)

SOLD



Item #16

William Tersteeg

Checker Bay Light

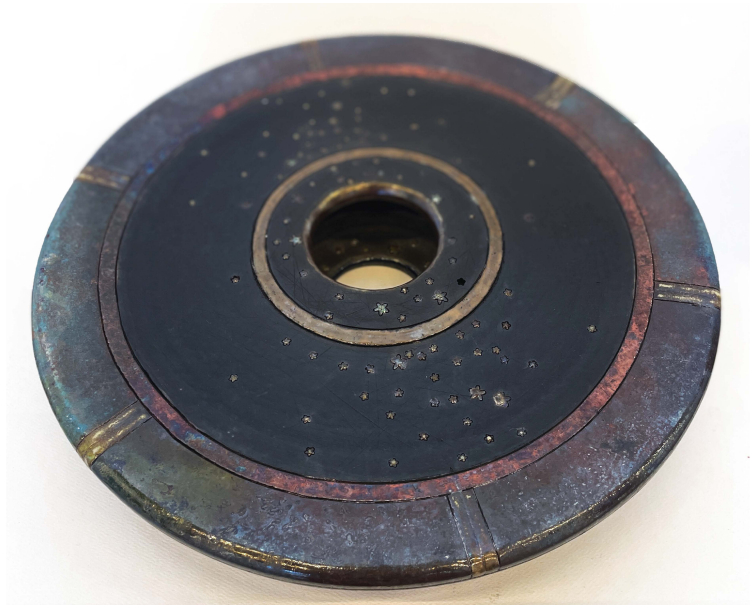
Raku Clay- 1 vessel, 2 sections, top removable

14" x 10"

\$2,500

(Inspired by a lighthouse in the state of Maine)

SOLD



Bottom View

Item #17

William Tersteeg

Quickly to the Sea

Raku Clay- 1 vessel, 2 sections, top removable

13" x 11.5"

\$2,000

(Inspired by Lydia Ann Lighthouse)

The "hole" in the bottom represents the empty night sky of the New Moon.



Item #19

William Tersteeg

Four Lighthouses

Raku Clay- 1 Piece

9" x 5"

\$800

(Inspired by Matagorda Island Lighthouse and Lydia Ann Lighthouse)

SOLD



Lot #20

William Tersteeg

Sunset on Pelican Bay

Raku Clay- 1 vessel, 2 sections, top removable

12" x 7"

\$1,000

(Inspired by Sabine Bank Lighthouse)

SOLD



Item #21

William Tersteeg

Day/Night

Raku Clay- 1 vessel, 2 sections, top removable

17.5" x 7.5"

\$2,500

(Inspired by Harbor Lighthouse in Hilton Head, South Carolina)

SOLD



Item #22

William Tersteeg

Shrimp Boat & Night Light

Raku Clay- 1 vessel, 2 sections

16" x 11"

\$1,800

(Inspired by Point Bolivar Lighthouse and Lydia Ann Lighthouse)

SOLD



Item #23

William Tersteeg

Island Light

Raku Clay- 2 sections

16" x 11"

\$2,500

(Inspired by Sabine Pass Lighthouse)

SOLD



Item #24

William Tersteeg *Gulf Coast Retreat*

Raku Clay- 1 vessel, 2 sections

17" x 7.5"

\$2,700

(Inspired by Galveston South Jetty Lantern)

SOLD



William Tersteeg